



ROCKY MOUNTAIN RESTORATION INITIATIVE

Restoringtherockies.org

RMRI-Southwest

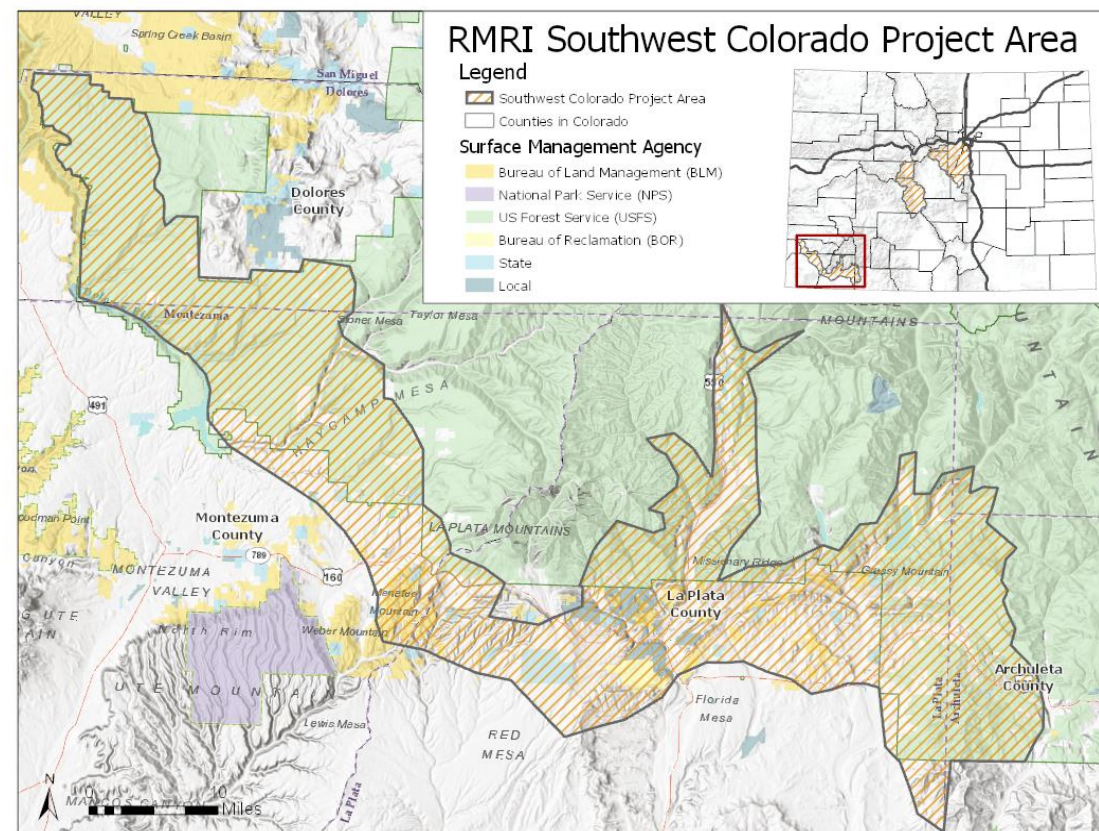


10 Year Commitments:

- ✓ 20,000 acres of private lands
- ✓ 290,000 acres of National Forest

Key Elements:

- ✓ Communities: Durango, Bayfield, Mancos, Dolores
- ✓ Water: Rivers - Dolores, Animas, Mancos, Florida and Los Pinos. Reservoirs: McPhee, Lemon, Jackson Gulch and Vallecito
- ✓ Wildlife: Preserving diversity of habitat & minimizing impacts.
- ✓ Recreation: Finding solutions for sustainable recreation.
- ✓ Local Economy: Growing wood products industry, Recreation & Tourism

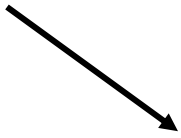


Vision. This project will serve as a model not only for rural Colorado, but for many rural communities throughout the West. It will establish a feasible process to create ecologically resilient landscapes, support local livelihoods and allow communities to live safely with wildfire.

Joint Prioritization Process Outline

1. Strategic Map

Fire and fuels experts build the optimal values "containers".



PODs

2. Assess Shared Values

Stakeholders and subject-matter-experts provide input on where RMRI values exist w/in PODs



Values

5. Identify Priority Locations

By geography, value, and interest group.



Geography



Decision Support Tool



Values

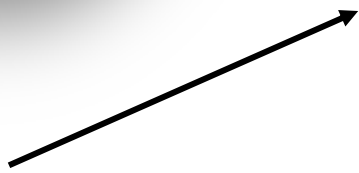


Interest Groups



3. Identify Opportunities

Steering Committee and operational partners identify near and long-term project pipeline



Opportunity

4. Organize Input

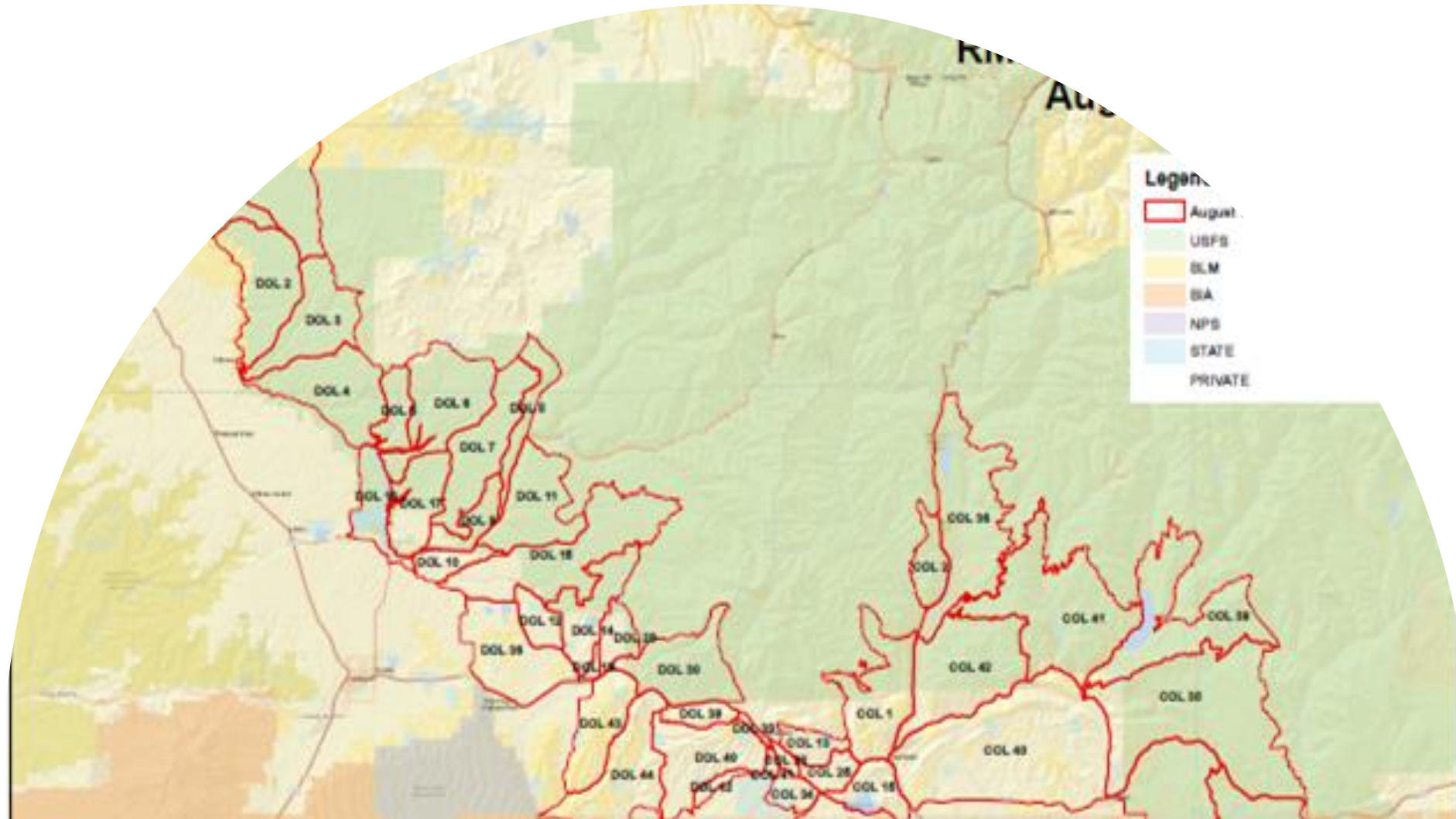
Steering Committee and Collaborative Leaders synthesize input along with 1,800 comments



Breakdown the Landscape

Why PODs?

- Need to delineate landscape into smaller pieces
- Science-based process to improve management decisions & outcomes
- Strategic orientation toward most likely threat – wildfire



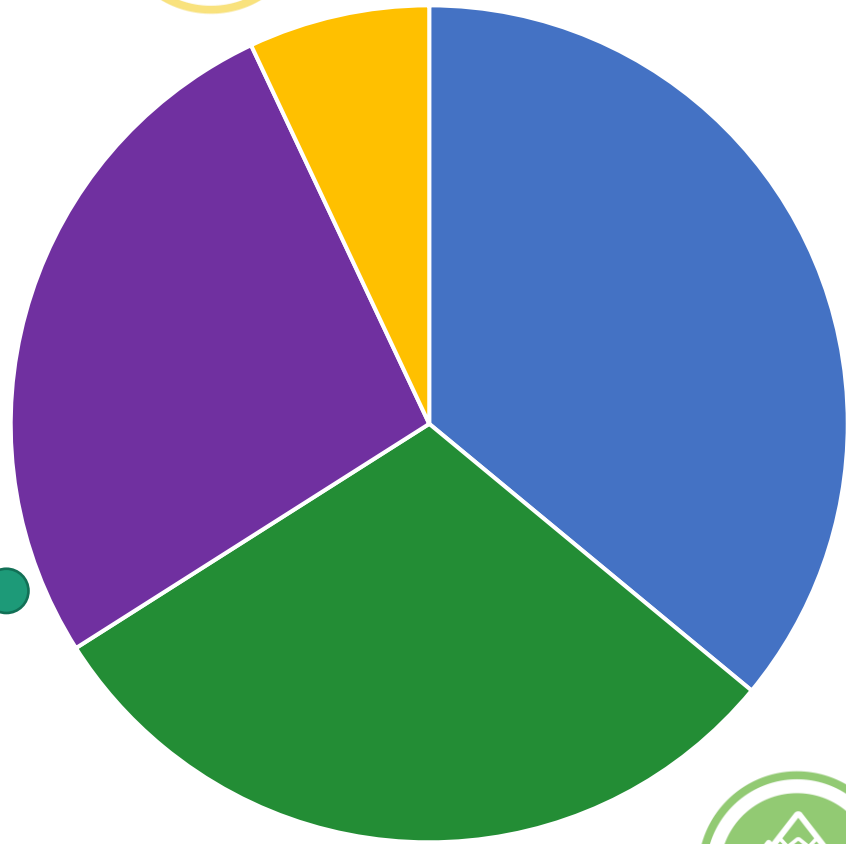
Assess Relative Priority



Recreation & Tourism



Resilient Communities



Water



Forests & Wildlife

How do we compare the values?

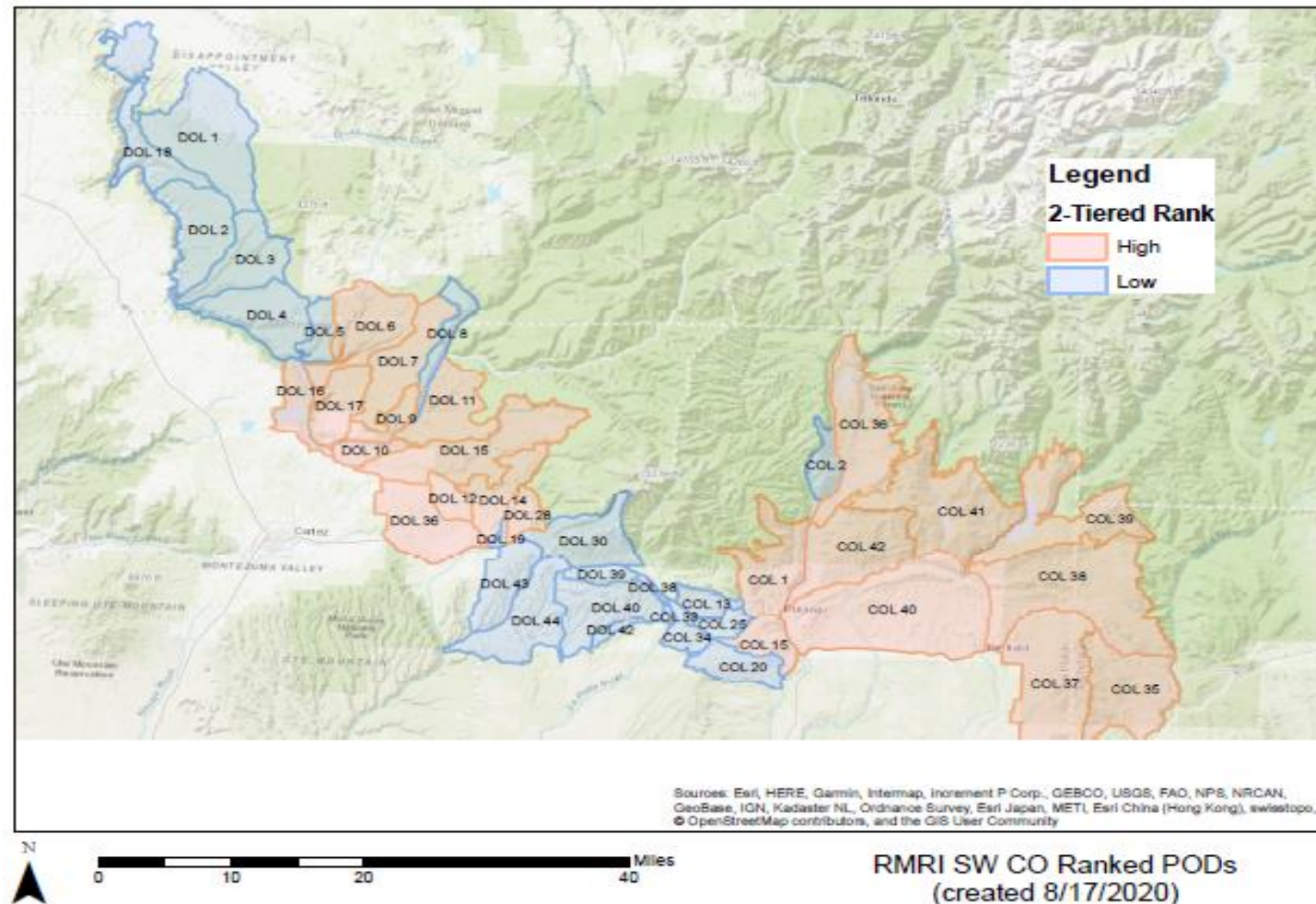
RMRI-SW Steering Committee

Value SME's +



Identify Initial Priority Areas

- ❑ Need subset of PODs
 - ❑ Balance of data quality, quantity, and participation
- ❑ Utilize existing collaborative prioritization and modeling efforts



Engage Stakeholders



4 Corners Backcountry
Horsemen

Animas-La Plata Water
Conservation District

Animas Watershed Partnership
Backcountry Hunters & Anglers

Bureau of Land Management

City of Cortez Water Dept

City of Durango

Colorado Timber Industry
Association

Colorado Parks and Wildlife

Colorado State Forest Service

Division of Fire Prevention and
Control

Dolores Water CD

DWRF Collaborative

Durango FPD

Fire Adapted Colorado

Four Rivers Resilient Forest
Collaborative

Florida Water CD

Fort Lewis College

La Plata Co Planning

La Plata County OEC

La Plata Open Space

Mancos Water CD

Montezuma County

Montezuma Land Conservancy

Montrose Forest Products

Mountain Studies Institute

Natural Resource Conservation
Service

National Wild Turkey Federation

Pine River Irrigation District

San Juan Sledders

Short Forestry, LLC

SJ Trail Riders

San Juan Mountains Association

Southern Ute

Studs Lumber

SW Basin Roundtable

SW Colorado Cycling Assn

SW Conservation District

Timber Age Systems

The Nature Conservancy

Durango Trails

Trout Unlimited





US Forest Service

Ute Mt Ute

Wildfire Adapted Partnership

All Voters' Top Five PODs by Value



 Clean Water	 Communities	 Forests & Wildlife	 Recreation
COL 39	COL 1	DOL 15	DOL 16
COL 41	COL 42	COL 35	DOL 14
DOL 14	COL 40	<u>COL 36</u>	<u>DOL 17</u>
DOL 16	DOL 10	COL 37	COL 1
<u>COL 36</u>	<u>DOL 17</u>	<u>DOL 17</u>	<u>COL 36</u>

Water: TOP 10 PODs Comparison

Steering Committee	SMEs	DWRF	4 Rivers	ALL Voters
COL 39	COL 39	DOL 16	COL 41	COL 39
COL 36	DOL 14	DOL 9	COL 39	COL 41
COL 14	COL 41	DOL 11	COL 42	DOL 14
DOL 16	DOL 10	DOL 14	COL 1	DOL 16
DOL 41	COL 1	DOL 17	COL 36	COL 36
DOL 17	COL 38	DOL 10	COL 40	DOL 17
COL 40	COL 36	DOL 7	COL 16/15/18	COL 40
DOL 9	DOL 16	DOL 15	COL 38	COL 1
DOL 15	DOL 17	DOL 28	COL 37	DOL 9
COL 16/15/18	DOL 11	DOL 6	COL 35	DOL 10

COMMUNITIES: TOP 10 PODs Comparison

Steering Committee	SMEs	DWRF	4 Rivers	ALL Voters
COL 1	COL 1	DOL 10	COL 1	COL 1
COL 40	COL 42	DOL 36	COL 42	COL 42
DOL 17	COL 16/15/18	DOL 9	COL 40	COL 40
COL 42	COL 40	DOL 14	COL 38	DOL 10
COL 41	COL 36	DOL 17	COL 36	DOL 17
DOL 10	DOL 10	DOL 12	COL 41	DOL 9
DOL 16	COL 38	DOL 11	COL 16/15/18	DOL 14
COL 39	DOL 9	DOL 28	COL 39	COL 36
DOL 14	DOL 17	DOL 16	COL 37	COL 38
DOL 12	COL 39	DOL 15	COL 35	DOL 16

WILDLIFE: TOP 10 PODs Comparison

Steering Committee	SMEs	DWRF	4 Rivers	ALL Voters
DOL 17	COL 37	DOL 15	COL 38	DOL 15
COL 36	DOL 15	DOL 7	COL 35	COL 35
COL 41	COL 35	DOL 16	COL 36	COL 36
COL 39	DOL 11	DOL 6	COL 39	COL 37
COL 1	DOL 14	DOL 17	COL 41	DOL 17
COL 42	DOL 9	DOL 11	COL 37	COL 39
COL 37	DOL 28	DOL 14	COL 42	COL 38
COL 38	COL 36	DOL 9	COL 1	COL 42
DOL 16	COL 39	DOL 28	COL 40	COL 41
DOL 15	COL 42	DOL 36	COL 16/15/18	DOL 16

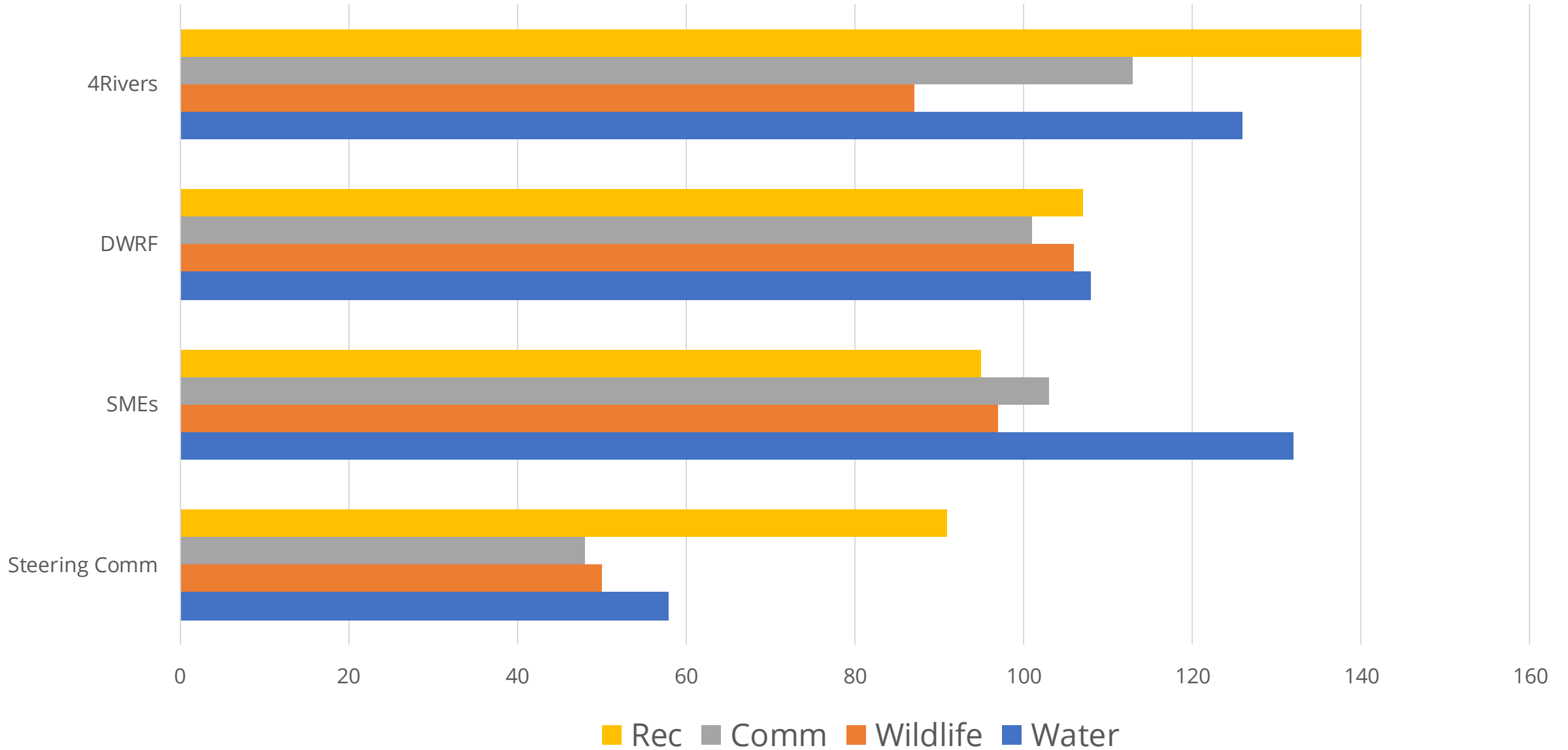
RECREATION: TOP 10 PODs Comparison

Steering Committee	SMEs	DWRF	4 Rivers	ALL Voters
DOL 16	COL 1	DOL 14	COL 1	DOL 16
DOL 17	DOL 7	DOL 16	COL 16/15/18	DOL 14
COL 39	COL 42	DOL 17	COL 36	DOL 17
COL 41	DOL 14	DOL 11	COL 39	COL 1
DOL 14	DOL 16	DOL 7	COL 42	COL 36
COL 36	DOL 17	DOL 10	COL 41	COL 42
COL 1	COL 36	DOL 15	COL 40	DOL 7
DOL 9	DOL 9	DOL 9	COL 38	COL 16/15/18
COL 42	COL 40	DOL 36	COL 37	COL 41
DOL 7	COL 16/15/18	DOL 12	COL 35	COL 39

All Voters' TOP FIVE by Value

WATER	COMMUNITIES	WILDLIFE	RECREATION
COL 39	COL 1	DOL 15	DOL 16
COL 41	COL 42	COL 35	DOL 14
DOL 14	COL 40	<u>COL 36</u>	<u>DOL 17</u>
DOL 16	DOL 10	COL 37	COL 1
<u>COL 36</u>	<u>DOL 17</u>	<u>DOL 17</u>	<u>COL 36</u>

Comments by Group & Value



RMRI SW Stakeholder Priority Values



Water

- 1 - COL 39
- 2 - COL 41
- 3 - DOL 14

Forests/Wildlife

- 1 - DOL 15
- 2 - COL 35
- 3 - COL 36

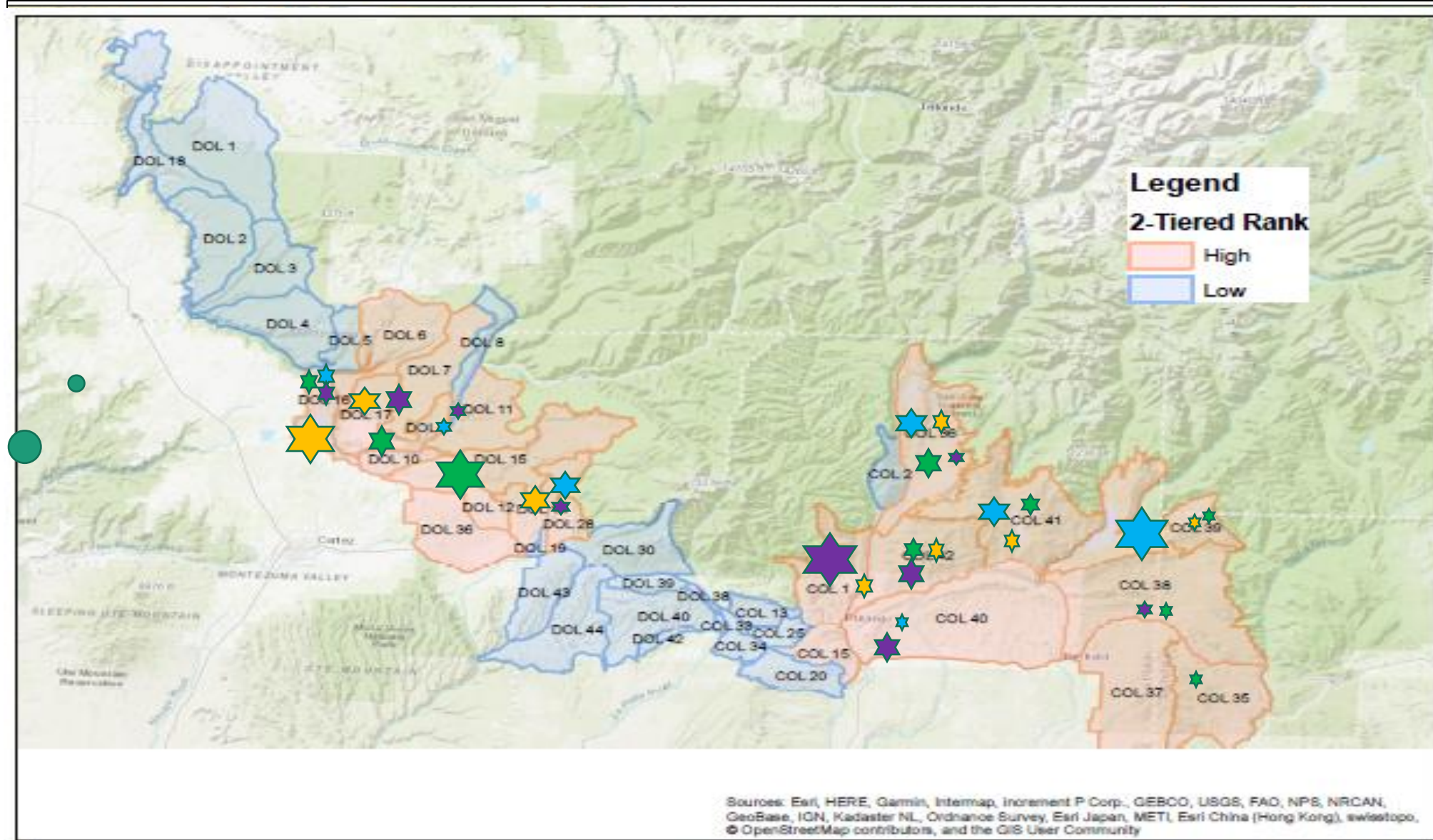


Communities

- 1 - COL 1
- 2 - COL 42
- 3 - COL 40

Recreation

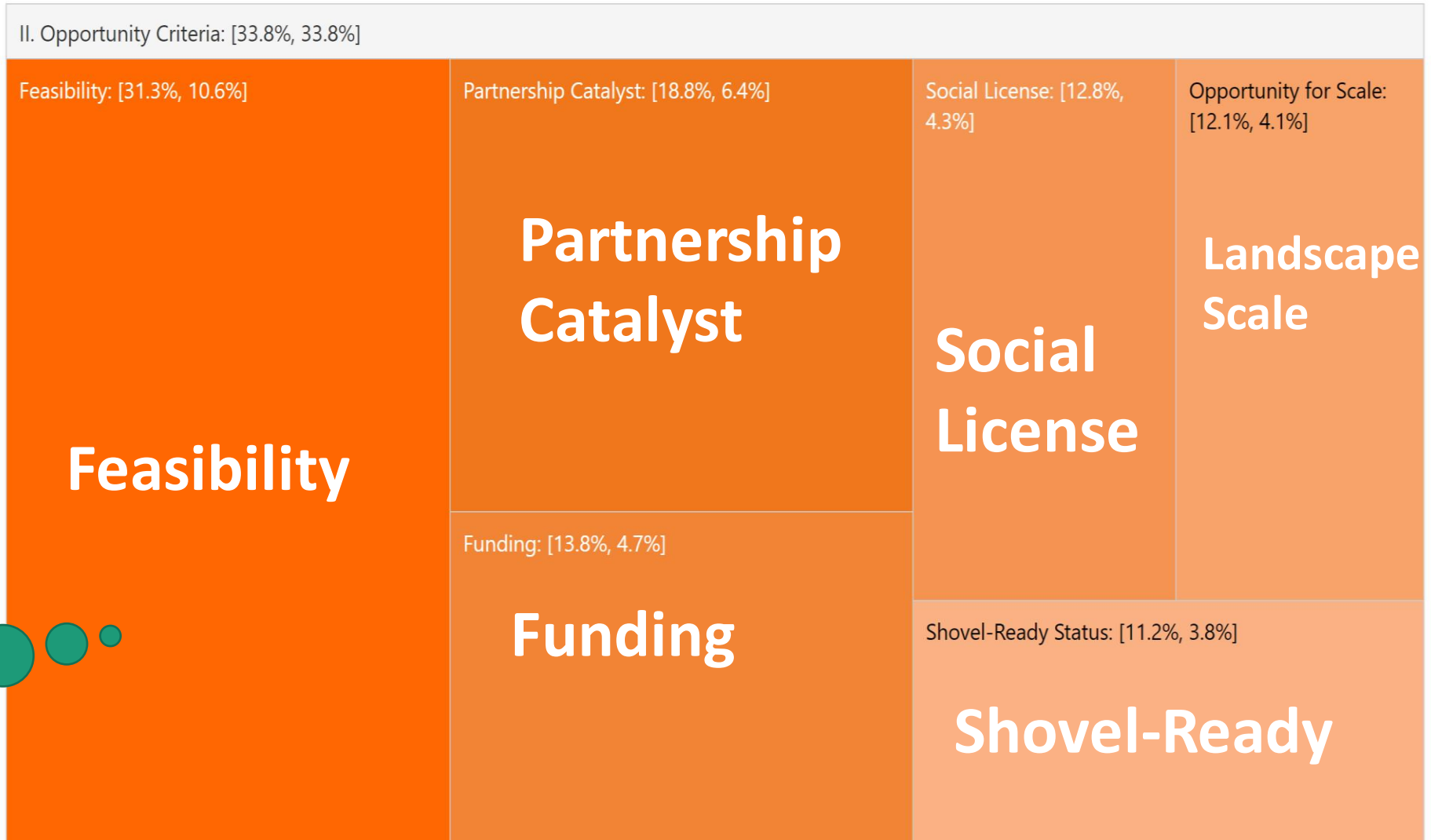
- 1 - DOL 16
- 2 - DOL 14
- 3 - DOL 17



Now we know where we should work...

RMRI SW CO Ranked PODs (created 8/17/2020)

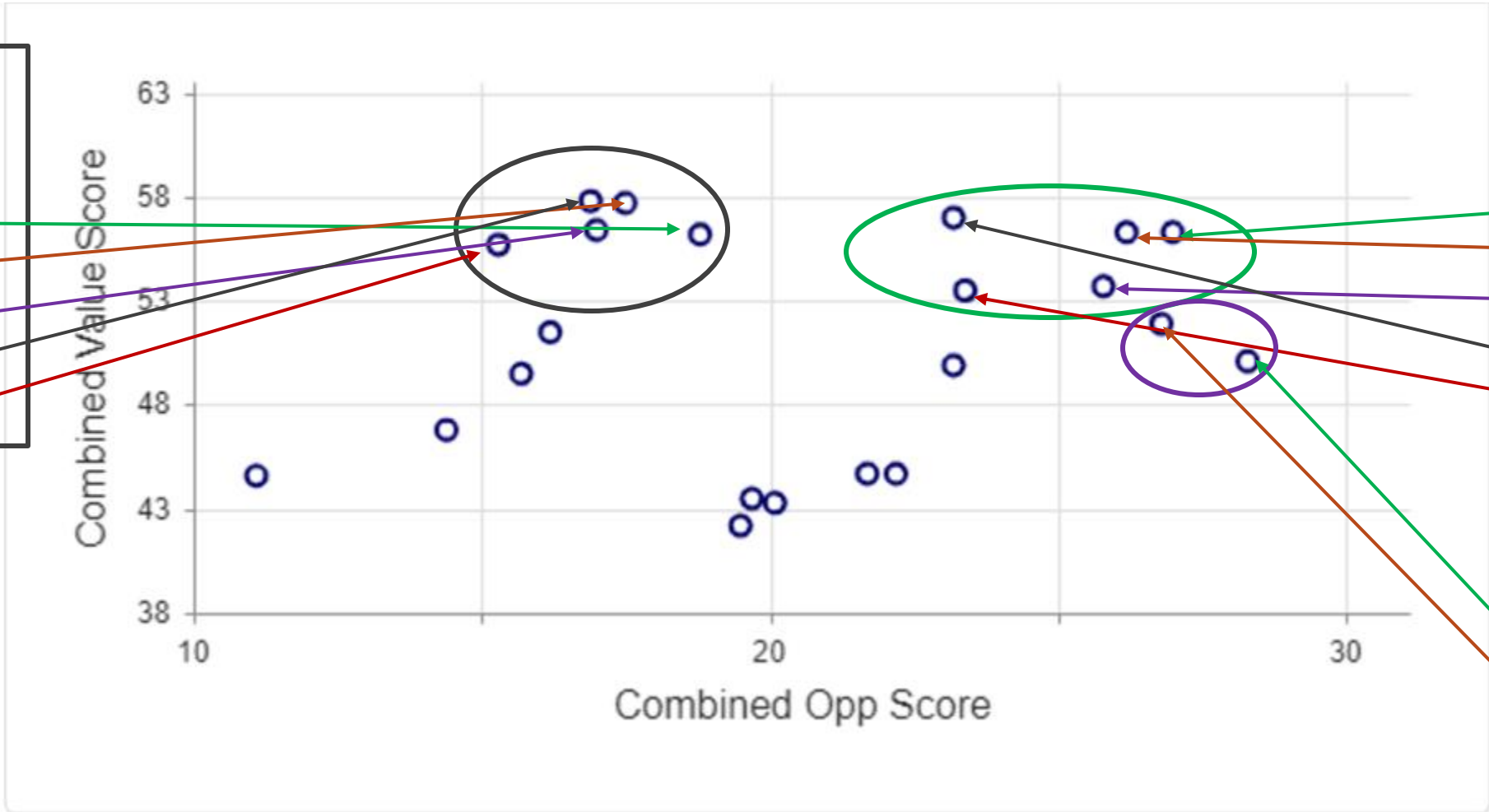
Assess Opportunity



We need to assess where we can work now and in the future

Potential Near-Term RMRI SW Planning & Implementation Priorities

- TOP 5 Planning PODs**
- 1- COL 41
 - 2- COL 36
 - 3- DOL 16
 - 4- COL 39
 - 5- COL 42



- TOP 5 GO PODs**
- 1- COL 1
 - 2- DOL 14
 - 3- DOL 9
 - 4- DOL 17
 - 5- COL 40

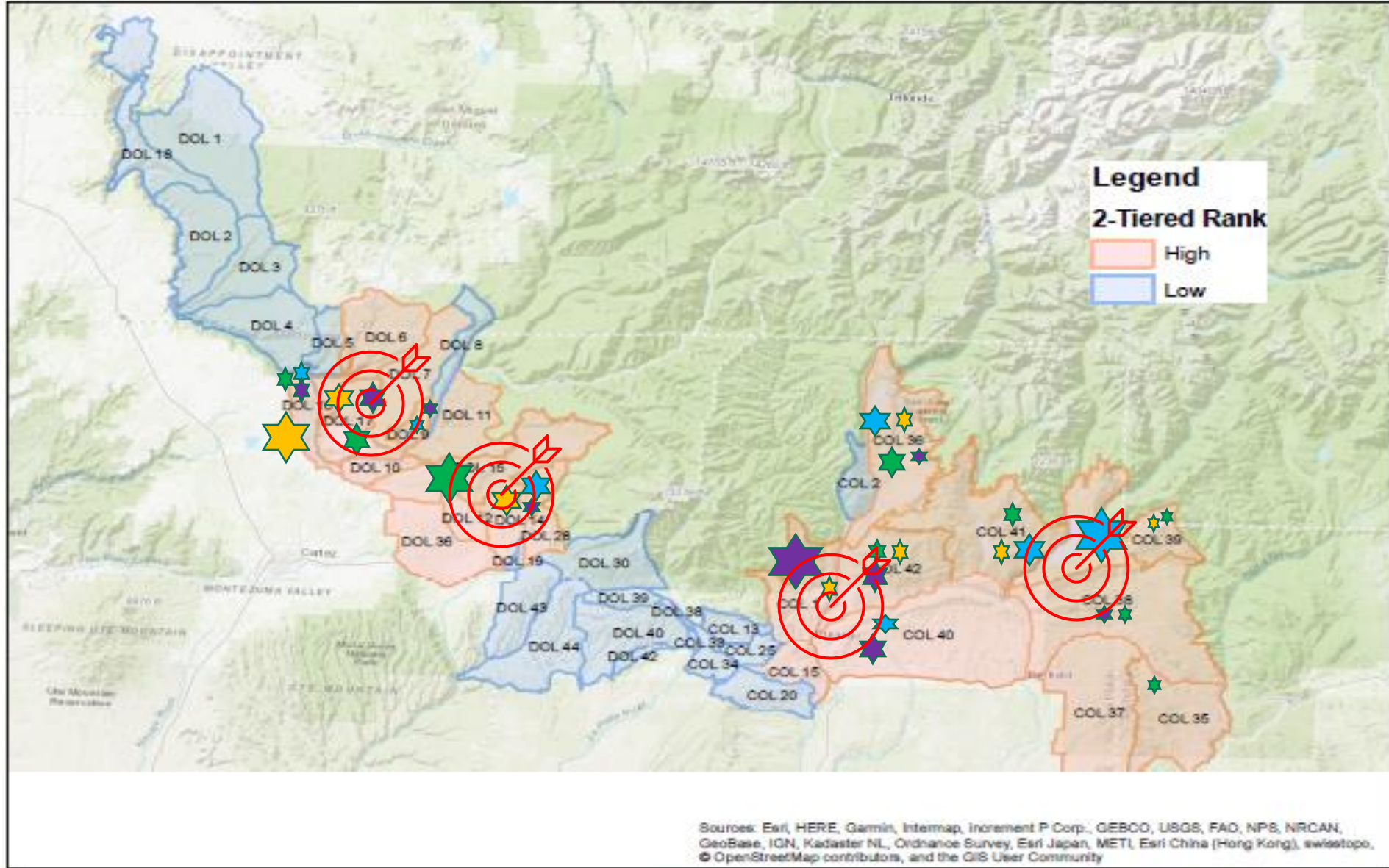
- High Opportunity PODs**
- 1- COL 38
 - 2- DOL 15

RMRI SW Planning & Implementation Priorities



Near-Term Priorities

- | | |
|--------|--------|
| COL 1 | DOL 9 |
| COL 38 | DOL 14 |
| COL 40 | DOL 15 |
| COL 41 | DOL 17 |



Sources: Esri, HERE, Garmin, Intermap, increment P Corp., GEBCO, USGS, FAO, NPS, NRCAN, GeoBase, IGN, Kadaster NL, Ordnance Survey, Esri Japan, METI, Esri China (Hong Kong), swisstopo, © OpenStreetMap contributors, and the GIS User Community





ROCKY MOUNTAIN RESTORATION INITIATIVE



Prescribed Fire, Haycamp Mesa,
Dolores Ranger District, SJNF

Southwest Colorado – Landscape Prioritization